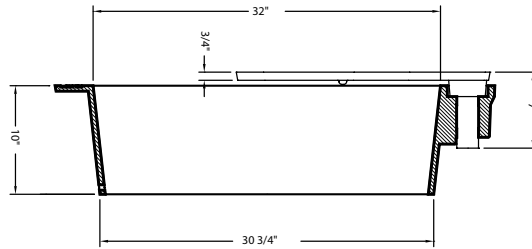


■ Note: When specifying/ordering grates, refer to "Choosing the Proper Inlet Grate" on pages 125-126.
For a complete listing of FREE OPEN AREAS and WEIR PERIMETERS of all NEENAH grates, refer to pages 327-332.

NEW

R-8580 **Fire Grate and Ring**

Total Weight 245#



Used as outdoor cooking facility in national, state and city parks.
Fire ring is imbedded in earth at grade desired.
Integral cast pin in grate locks into frame.

Grate swings freely over fire allowing temperature control.
Made in accordance with U.S.D.A. specifications.

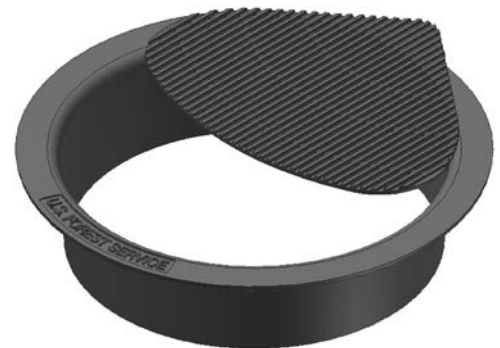
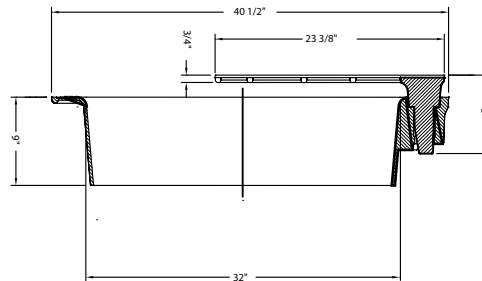
Grate locked in place to prevent unauthorized removal.

Cooking temperature controlled by moving free
swinging grate away from center of fire.

NEW

R-8580-A **Fire Grate and Ring**

Total Weight 170#



Used as outdoor cooking facility.
Fire ring is imbedded in earth at grade desired.

Grate swings freely over fire allowing temperature control.

Cooking temperature controlled by moving free
swinging grate away from center of fire.

Supplied By:

TRENCHDRAIN
SUPPLY
877-903-7246
www.trenchdrainsupply.com

ACCESS
& HATCH
COVERS

11

INF

323

[CLICK HERE to return to the Table of Contents](#)